

Human-wildlife interactions – the balancing act

SCCS-Australia January 2012

Charlotte Whitham¹, Dr. Kun Shi¹, Dr. Philip Riordan²

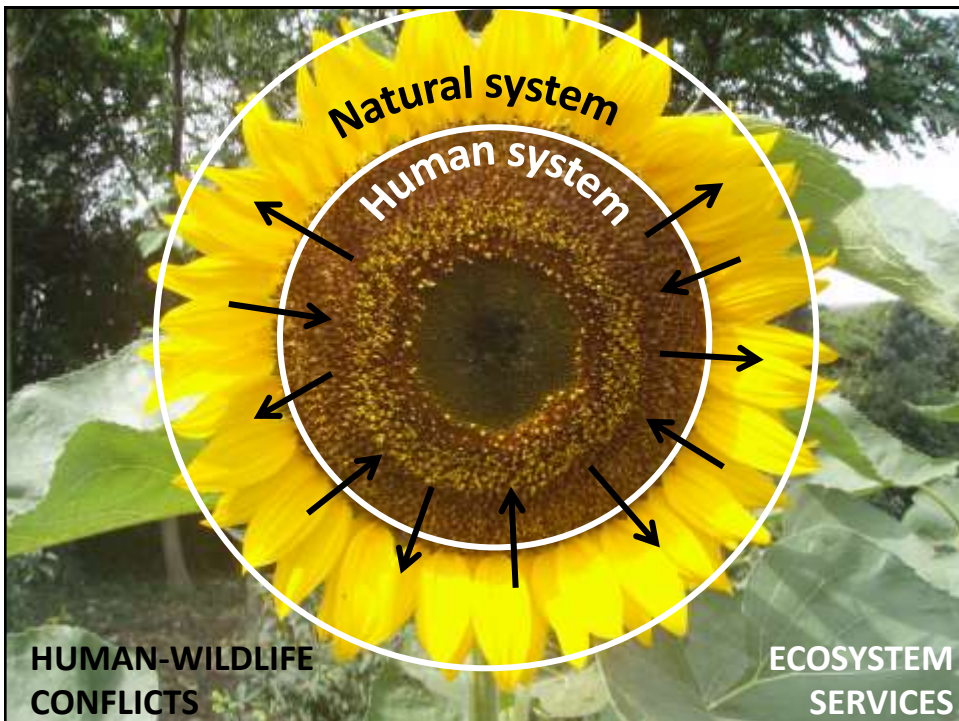
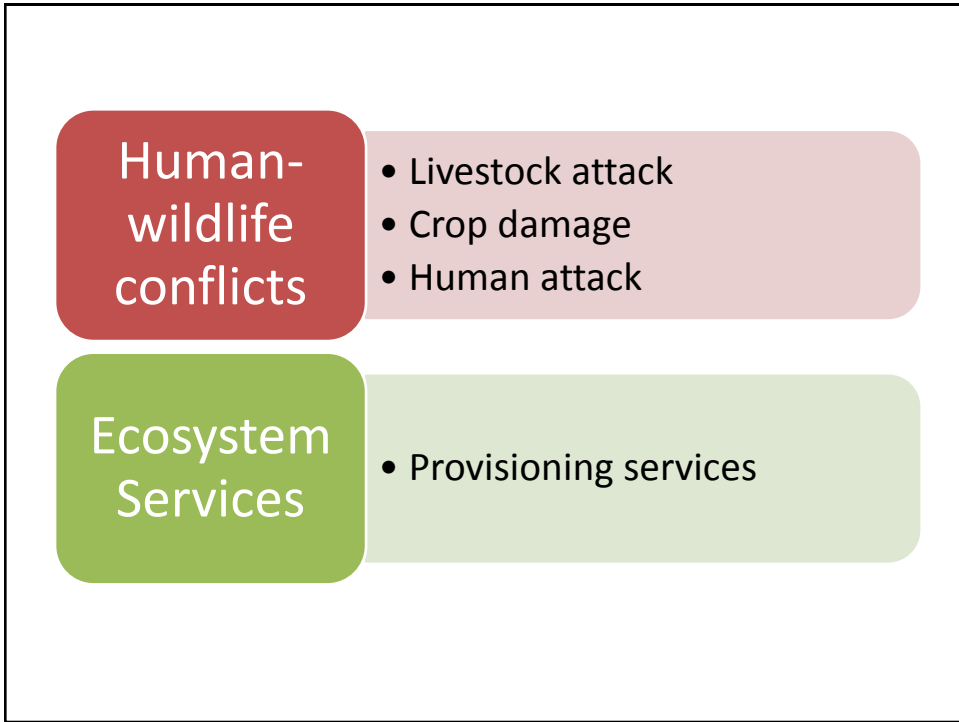
¹Beijing Forestry University

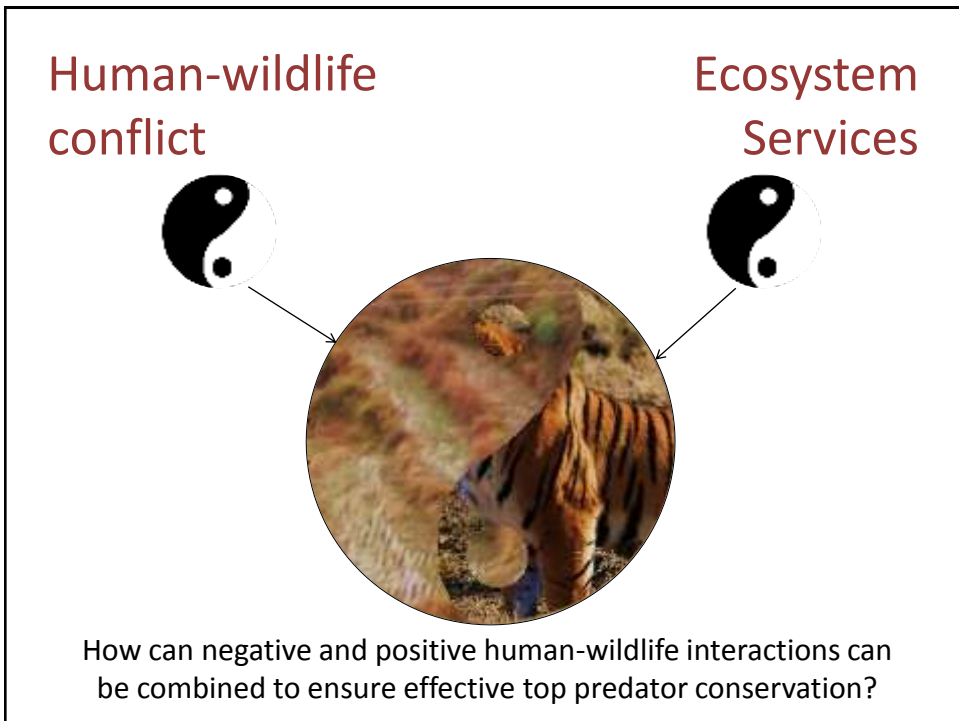
²Wildlife Conservation Research Unit, University of Oxford



Managing to understand,
understanding to manage:

Human-wildlife conflicts in the
context of ecosystem services and
top predator conservation





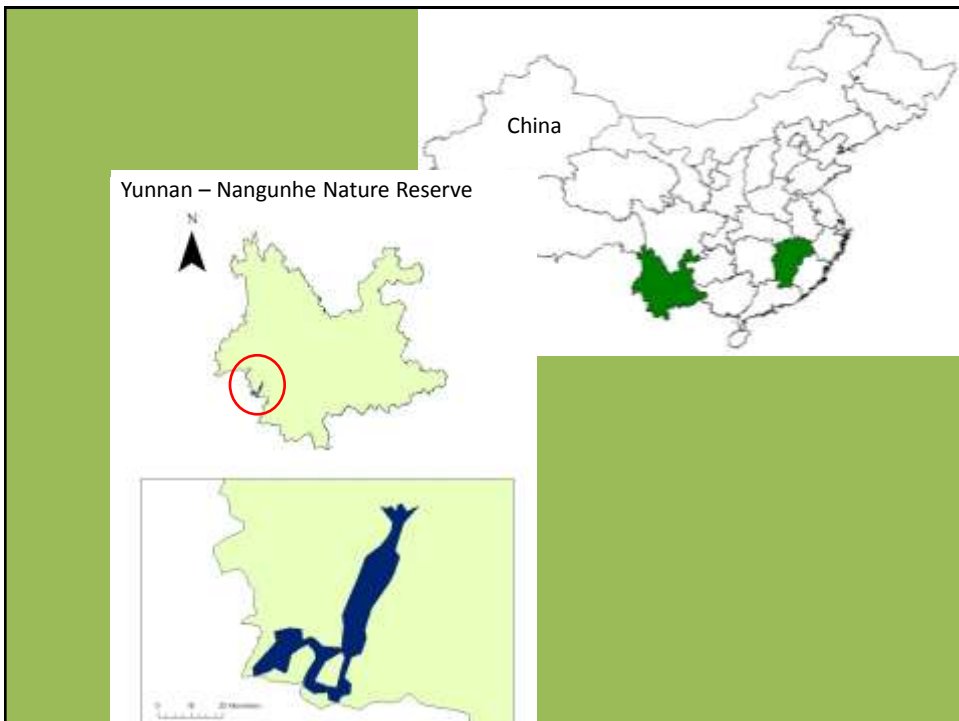
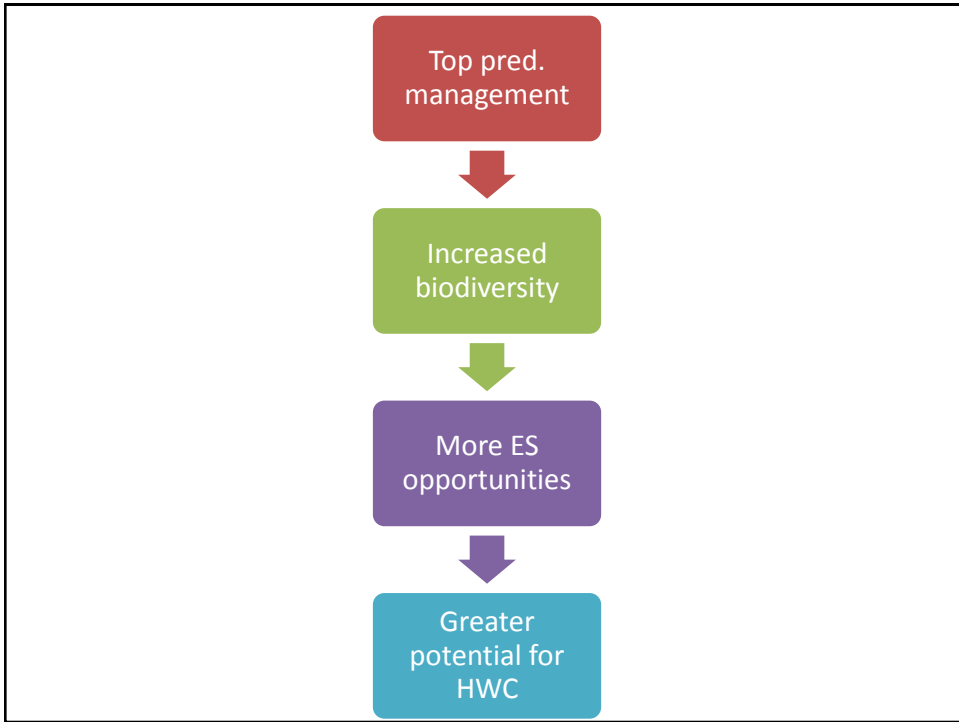
Research question

Are there patterns between endpoints of HWC and ES

.... importance for top predator management

Shaping the framework

Concept	Number of publications
Human-wildlife conflicts (HWC)	1008
Ecosystem Services	2236
Human-wildlife conflicts AND Ecosystem Services	0



Nangunhe Nature Reserve (南滚河自然保护区)

- National Nature Reserve
- May 2012 – Top predator pilot survey - 4 camera trap stations (9 cameras)
- Nov-December 2012 – Pilot household (37) and staff interviews (8)



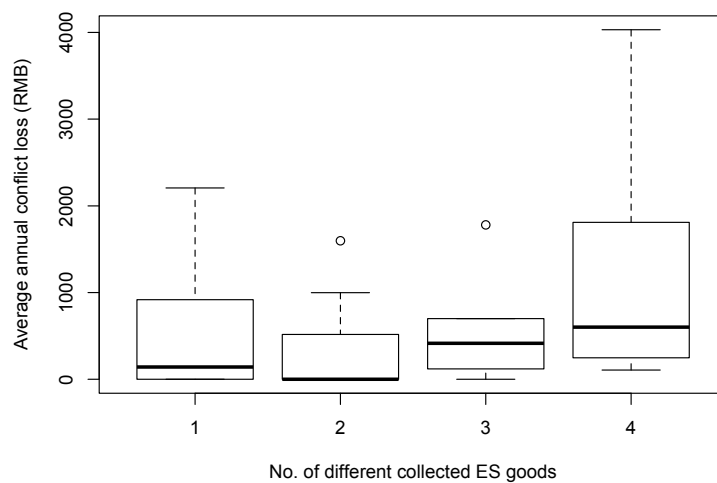
© 南滚河国家自然保护区

Results – Provisioning Services

- Construction – timber & bamboo
- Fuel – firewood
- Food – mushrooms, wild vegetables
- Medicinal plants



Shaping the framework



Shaping the framework

- Basic ANOVA

*HWC loss ~ ES * corridor proximity * wealth category*

- ES = ES “diversity” or ES “value” (estimated)

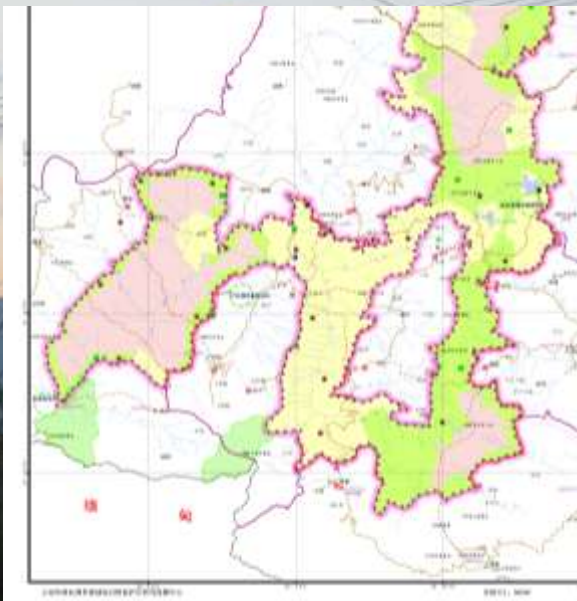
ESdiversity:Wealth category

$F_{(5,22)} = 2.487, p = 0.0625$

Future directions...

MANAGEMENT

- Functional zones
- Ecological corridor
- Household-level management
- ES variables



Conclusion

- Patterns between human wildlife conflict and ecosystem services...
- ...in different areas of top predator management
- Importance for China
- Empirically proving the framework



Acknowledgements

- Fieldwork assistants: Pan Guoliang, Sun Qiaoqi, Wu Qian, Du Hui & Shi Fanglei
- Funding: State Forestry Administration (SFA) – China
- Local staff (王所长) and inhabitants of Matoushan Nature Reserve, Jiangxi and Nangunhe Nature Reserve, Yunnan
- Supervisors: Dr. Shi Kun & Dr. Phil Riordan

References

- Beschta, RL, and WJ Ripple. 2009. "Large Predators and Trophic Cascades in Terrestrial Ecosystems of the Western United States." *Biological Conservation* **142** (11): 2401–14.
- Chen, ZX, and XS Zhang. 2000. "Value of Ecosystem Services in China." *Chinese Science Bulletin* **45**(10): 870–.
- Daily, G, and Pamela A. Matson. 2008. "Ecosystem Services: From Theory to Implementation." *Proceedings of the National Academy of Sciences* **105**(28): 9455–56.
- Estes, JA, J Terborgh, JS Brashares, ME Power, J Berger, WJ Bond, SR Carpenter, TE Essington, RD Holt, and JBC Jackson. 2011. "Trophic Downgrading of Planet Earth." *Science* **333**(6040): 301.
- Johnson, Arlyne, Chanthavy Vongkhamheng, Venevongphet, Tha Visouk Saithongdam, and Michael Hedemark. 2006. "Status of Tiger, Prey and Human-Tiger Conflict in the Nam Et-Phou Louey National Protected Area, Lao PDR." In eds. J A McNeely, TM McCarthy, A Smith, L Olsvig-Whittaker, and E Wikramanayake. *Nepal: Conservation Biology in Asia*, 1–4.
- Karlsson, J, and Ö Johansson. 2010. "Predictability of Repeated Carnivore Attacks on Livestock Favours Reactive Use of Mitigation Measures." *Journal of Applied Ecology* **47**(1): 166–71.
- Lamarque, François, J Anderson, P Chardonnet, R Fergusson, M Lagrange, Y Osei-Owusu, L Bakker, U Belemsobgo, B Beytell, H Boulet, B Soto, and P Tabi Tako-Eta. 2008. *Human-Wildlife Conflict in Africa*. Food & Agriculture Org.

References

- Macdonald, DW, and C Sillero-Zubiri. 2002. "Large Carnivores and Conflict: Lion Conservation in Context." In *Lion conservation research. Workshop 2: modelling conflict*, eds. Andrew J Loveridge, T Lynam, and D W Macdonald.
- Marchini, Silvio. 2010. "Human Dimensions of the Conflicts Between People and Jaguars (*Panthera Onca*) in Brazil." PhD Thesis.
- Pettigrew, Melissa, G Xie, Aili Kang, Madhu Rao, John Goodrich, Tong LIU, and J Berger. 2012. "Human-Carnivore Conflict in China: a Review of Current Approaches with Recommendations for Improved Management." *Integrative Zoology* **7**(2): 210–26.
- Ripple, WJ, and RL Beschta. 2006. "Linking a Cougar Decline, Trophic Cascade, and Catastrophic Regime Shift in Zion National Park." *BIOLOGICAL CONSERVATION* **133**(4): 397–408.
- Robinson, John G. 2006. "Conservation Biology and Real-World Conservation." *Conservation Biology* **20**(3): 658–69.
- Seppelt, R, CF Dormann, FV Eppink, S Lautenbach, and S Schmidt. 2011. "A Quantitative Review of Ecosystem Service Studies: Approaches, Shortcomings and the Road Ahead." *Journal of Applied Ecology* **48**: 630–36.
- Treves, A, and KU Karanth. 2003. "Human-Carnivore Conflict and Perspectives on Carnivore Management Worldwide." *Conservation Biology* **17**(6): 1491–99.
- Woodroffe, R. 1998. "Edge Effects and the Extinction of Populations Inside Protected Areas." *Science* **280**(5372): 2126–28.
- Woodroffe, R. 2000. "Predators and People: Using Human Densities to Interpret Declines of Large Carnivores." *Animal Conservation* **3**: 165–73.